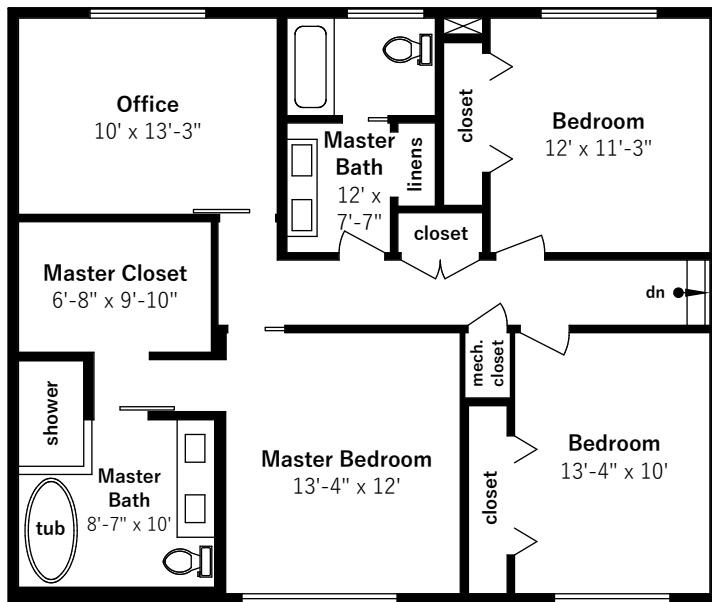




30 Moraga Via

Orinda, CA 94563



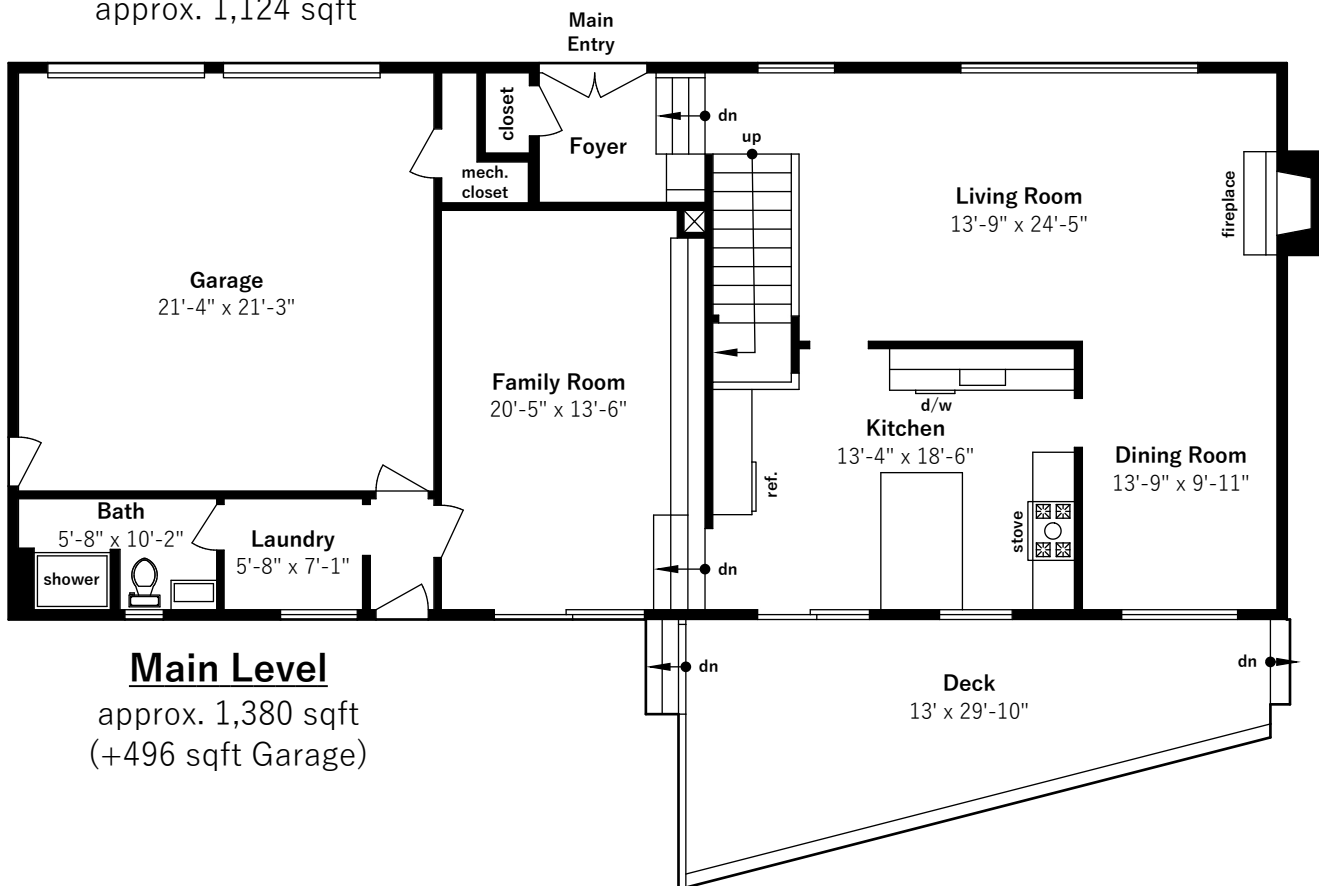
Upper Level

approx. 1,124 sqft

Estimated Total Finished Square Footage: 2,504 sqft
Main Level: 1,380 sqft
Upper Level: 1,124 sqft

Estimated Total Unfinished Square Footage: 496 sqft
Garage: 496 sqft

All square footage measured from perimeter of exterior walls. Deck is not included in calculations.
Measured on January 9th, 2019



Main Level

approx. 1,380 sqft
(+496 sqft Garage)